



title: **Optofonica Capsule**

year: **2008**

author: **TeZ**

The Optofonica Capsule is a futuristic design/architectural object, featuring a mechanized structure whose parts form an autonomous immersive audiovisual environment. The shell-like shape of the capsule envelops the body of the visitor to optimize the experience of Surround and Tactile Sound. Low frequencies are fed through a specially constructed floor, directly into the bone system of the human body, thereby converting the sound into hyper-perceivable vibration. The five panels of the Capsule's helmet are designed with specific material and transducers so to vibrate and reproduce the surround sound field without any use of traditional speakers. A flat screen is positioned to cover most of the visual field of the spectator to engage sight at a short distance and panoramic vision. Immersion within the Capsule adds a new sensorial dimension to the fruition of audiovisual art and expands the possibilities of creation by the artists.



The Optofonica Capsule has been developed within the framework of the Optofonica project, initiated by TeZ in 2006 as a platform devoted to production and diffusion of audiovisual art, where the synesthetic aspect and the sound spatialization components are relevant.

The Capsule was premiered at NEMO festival in Paris, April 2008, and later shown at:

- ELEKTRA festival, Montreal, May 2008.
- CROSSWIRE exhibition, N.I.M.K. Amsterdam, July 2008.
- La Maison des Metallos, Paris, September 2008
- NEMO festival, Paris, April 2009
- SEE THIS SOUND exhibition, Lentos Kunstmuseum / Linz, Sept. 2009 > Jan. 2010
- FUTURITY NOW - TRANSMEDIALE.10 festival / Berlin - February 2010
- BIORHYTHM exhibition, Science Gallery / Dublin - July > October 2010

The Capsule was co-designed with Janis Ponisch and co-produced by TeZ and ARCADI (Paris), with technical sponsorships by PHILIPS Research, ESARC HiTech, ERGOSWISS Benelux and ANGST-PFISTER.

<http://www.optofonica.com>

<http://www.tez.it>

<http://www.arcadi.fr>

<http://www.research.philips.com>

<http://www.esarc.com>

<http://ergoswiss.nl>

<http://www.angst-pfister.com>

contact:
TeZ // Optofonica
Albert Cuypstraat 31-II
1072 CL, Amsterdam
The Netherlands
tel +31.644.211.195
tez@optofonica.com



A lengthy program of audiovisual works from international artists has been curated and collected by TeZ for screenings in the Capsule and Optofonica Surround Cinema shows. This collection will also be released on dvd soon.

All works are played from a computer with best digital video format and uncompressed surround sound (unlike dvd quality).

1) **Evelina Domnitch + Dmitry Gelfand _ Richard Chartier (RU/US):** *Sonolevitation*

2) **Telcosystems (NL):** *ScapeTime*

3) **Ryan Jeffery + Scanner (US/NL):** *Waterfall*

4) **Ryoichi Kurokawa (JP):** *Vento Ignis*

5) **Kanta Horio (JP):** *EM#3*

6) **Jason Graham + Kim Cascone + TeZ (US/IT):** *Raindrops #7*

7) **Skoltz_Kolgen (CA):** *Ether*

8) **Kaffe Matthews (UK):** *Mount Magnet*

9) **Marcel Wierckx (NL):** *Black Noise White Silence*

10) **Martijn van Boven (NL):** *A Thousand Scapes*

11) **Otolab (IT):** *Animula*

12) **Ray_XXXX (CA):** *Pulse*

13) **Lia + @c (AT/PT):** *Study #40*

14) **Bas van Koolwijk (NL):** *FDBCK/AV 3D*

15) **Frank Bretschneider (DE):** *Rhythm Exp.*

16) **Domenico Sciajno (IT):** *SGF*

17) **Pe Lang + Zimoun (CH):** *Untitled Sound Objects*

18) **Ulf Langheinrich (DE):** *It would have been fantastic*

19) **Quayola + Autobam + Mira Calix (IT/UK):** *Strata #2*

20) **SKIF (NL/US):** *SKIF*

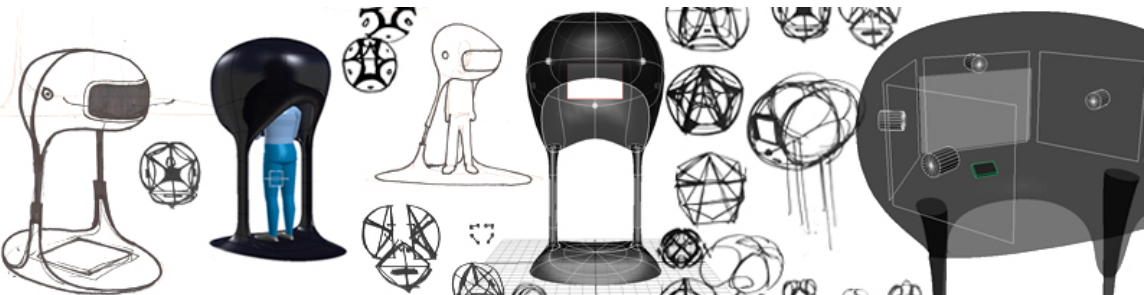
21) **David Muth & Hiaz (UK/AT):** *Counterclockwise*

22) **Kurt Hentschlager (AT):** *xscape*

23) **Natalie Bewernitz + Marek Goldowski (DE):** *Life at the Witch Trails*

24) **Modulate (UK):** *Md8-13*

A selection from this program will be curated by TeZ for different occasions/venues, depending upon contextual criteria.



Optofonica Capsule // first sketches



Optofonica Capsule // construction details



details and premiere at NEMO 2008 (Paris)



Lentos Kunstmuseum (Linz) / August 2009



installation
dimensions: 120 x 100 x 250 cm (w/d/h)
weight approx. 80 Kg.

crate [flightcase with wheels]
dimensions: 126 x 85 x 89 cm (w/d/h)
weight approx. 140 Kg., including installation inside